



## EU PRICES of COW's RAW MILK in EURO/100 kg

Source : Regulation (EC) No 479/2010 Article 2 (prices of raw milk at real fat and protein content paid to milk producers)

																													Weighted averages				
	Belgium	Bulgaria	Czech Rep.	Denmark	Germany	Estonia	Ireland	Greece	Spain	France	Croatia	Italy	Cyprus	Latvia	Lithuania	Luxembourg	Hungary	Malta	Netherlands	Austria	Poland	Portugal	Romania	Slovenia	Slovakia	Finland	Sweden	U.K.	EU-15	EU-13	EU (weight. avg.)	% compared to previous month (*)	
2015m01	29.09	31.72	29.76	31.00	30.89	24.13	33.50	42.57	31.84	32.92	34.54	35.54	57.80	22.79	22.91	31.01	28.64	46.17	30.25	35.14	28.55	31.91	30.01	29.65	30.79	41.78	31.33	33.35	32.41	28.61	<b>31.87</b>	-4.2%	Jan-15
2015m02	29.02	31.14	29.57	30.98	30.82	23.97	32.63	42.50	31.75	32.63	34.00	35.43	57.29	22.06	22.23	30.66	28.78	45.68	31.50	34.94	29.09	31.59	28.53	29.16	29.92	36.98	30.57	35.56	32.54	28.64	<b>31.99</b>	+0.4%	Feb-15
2015m03	28.49	30.67	29.55	31.23	30.73	25.12	30.11	42.28	31.36	31.38	34.01	35.46	56.65	22.36	23.27	29.95	28.75	45.40	34.00	34.81	29.57	31.31	27.28	28.89	29.41	36.72	31.35	33.54	32.15	28.90	<b>31.69</b>	-1.0%	Mar-15
2015m04	28.21	28.49	28.90	32.82	30.75	24.93	30.79	41.28	30.10	31.16	33.27	34.79	56.65	22.74	23.22	30.06	27.66	44.44	33.25	33.81	29.35	32.49	26.99	28.52	29.08	36.62	31.30	33.04	31.93	28.53	<b>31.45</b>	-0.8%	Apr-15
2015m05	27.89	26.62	27.57	32.81	29.80	24.43	28.75	41.79	29.71	31.09	32.92	34.75	55.47	22.41	21.50	29.52	25.68	43.93	32.00	33.17	28.23	29.00	24.53	28.00	27.89	36.51	32.33	32.33	31.30	27.29	<b>30.73</b>	-2.3%	May-15
2015m06	27.35	26.56	26.60	30.90	28.83	23.26	28.16	41.58	29.42	31.53	32.24	34.85	55.78	21.33	20.71	28.80	24.29	44.96	30.50	32.69	26.98	28.79	23.56	27.65	27.00	36.45	31.71	31.89	30.79	26.21	<b>30.14</b>	-1.9%	Jun-15
2015m07	26.70	26.19	25.87	30.90	27.94	23.89	27.10	41.54	28.83	32.18	30.78	34.49	55.81	21.04	19.95	28.02	23.90	46.49	30.00	31.77	26.96	28.10	23.64	27.25	26.43	36.29	30.71	32.87	30.58	25.98	<b>29.92</b>	-0.7%	Jul-15
2015m08	27.21	27.22	25.32	29.92	27.77	22.36	27.97	41.58	29.03	33.77	31.05	34.24	54.97	20.40	19.08	28.48	24.03	48.20	28.50	32.04	26.54	28.18	24.21	27.36	26.25	36.80	29.76	31.66	30.56	25.63	<b>29.86</b>	-0.2%	Aug-15
2015m09	27.35	27.85	25.42	29.93	28.38	22.60	29.23	41.80	29.51	33.78	31.68	33.76	55.47	20.35	20.12	29.55	24.23	49.60	28.50	32.87	26.56	28.60	25.27	28.02	26.63	37.71	30.88	31.37	30.80	25.86	<b>30.10</b>	+0.8%	Sep-15
2015m10	28.27	28.44	26.01	30.58	29.43	22.87	31.08	41.86	30.00	32.99	32.04	33.93	56.45	20.97	22.06	30.75	24.99	49.34	29.00	34.12	27.31	28.65	26.96	28.52	27.08	38.06	32.73	33.05	31.41	26.67	<b>30.74</b>	+2.1%	Oct-15
2015m11	28.14	28.75	26.40	30.59	29.81	23.56	30.98	41.93	30.10	32.27	32.19	34.07	57.55	21.78	22.84	30.69	25.21	49.26	29.75	34.38	27.41	28.63	27.80	28.65	27.41	38.70	32.83	34.20	31.60	26.96	<b>30.94</b>	+0.7%	Nov-15
2015m12	27.41	28.85	26.70	30.69	29.75	23.44	29.43	41.36	30.10	31.74	31.92	34.75	58.13	21.96	22.14	30.33	25.02	47.95	30.00	34.45	27.39	28.71	27.01	28.33	27.43	38.51	32.98	32.69	31.29	26.88	<b>30.67</b>	-0.9%	Dec-15
2016m01	26.84	28.66	26.37	29.71	28.92	23.43	28.26	41.59	29.90	30.43	31.81	34.38	58.49	22.00	22.57	29.00	24.76	46.14	29.25	33.22	26.14	28.64	27.27	27.45	27.53	38.19	32.45	30.76	30.33	26.21	<b>29.74</b>	-3.0%	Jan-16
2016m02	25.81	28.17	25.49	<b>28.69</b>	28.13	23.20	27.58	40.63	29.71	30.10	29.86	34.09	57.52	21.42	21.42	28.37	24.56	44.12	29.25	31.73	25.60	28.00	26.92	26.65	26.87	37.95	31.03	32.01	29.99	25.58	<b>29.36</b>	-1.3%	Feb-16
2016m03	24.79	27.29	24.51	29.37	27.31	22.74	24.18	38.92	29.42	29.99	29.98	32.14	56.32	20.70	20.73	28.48	23.73	43.66	28.50	31.70	25.71	27.98	26.30	25.13	25.89	37.68	31.43	27.82	28.86	25.24	<b>28.35</b>	-3.5%	Mar-16
2016m04	24.08	25.72	23.56	28.48	25.74	21.92	24.08	38.00	28.93	29.39	29.10	31.49	54.74	19.49	19.38	27.59	22.55	42.94	27.50	30.78	24.43	28.01	24.78	23.64	24.72	37.58	31.17	26.41	27.91	24.01	<b>27.36</b>	-3.5%	Apr-16
2016m05	22.85	24.73	22.52	27.42	23.97	21.19	23.99	37.56	28.35	28.78	28.78	31.07	54.71	18.24	17.94	26.10	21.67	43.97	25.00	29.77	23.33	27.59	21.81	23.46	23.67	37.24	29.60	25.43	26.77	22.89	<b>26.22</b>	-4.2%	May-16
2016m06	22.26	24.60	22.02	26.22	23.18	20.24	23.50	37.35	27.96	28.68	28.16	30.63	55.00	17.78	16.91	25.04	21.02	45.03	25.00	29.26	23.12	27.40	21.62	23.16	23.17	36.77	27.96	24.65	26.25	22.51	<b>25.72</b>	-1.9%	Jun-16
2016m07	22.12	25.03	21.96	26.08	23.42	20.04	24.47	37.52	27.77	28.51	27.89	30.63	54.97	17.71	16.92	24.72	20.96	45.82	25.00	29.37	23.29	26.98	22.67	23.34	23.12	35.50	27.24	24.00	26.18	22.63	<b>25.68</b>	-0.2%	Jul-16
2016m08	24.67	25.88	22.34	26.21	24.30	20.75	27.00	37.89	28.16	29.41	28.37	30.47	54.85	18.64	17.86	25.07	22.07	46.30	25.00	29.90	24.95	26.84	23.59	24.15	23.39	35.77	28.35	24.36	26.87	23.82	<b>26.43</b>	+2.9%	Aug-16
2016m09	27.03	27.14	23.13	27.39	26.37	23.30	29.52	38.28	28.74	30.20	28.86	31.32	55.12	21.14	21.17	26.54	23.42	47.68	26.25	29.84	26.41	27.10	25.27	24.76	24.21	36.60	29.60	25.75	28.20	25.32	<b>27.79</b>	+5.2%	Sep-16
2016m10	29.50	28.22	23.60	29.43	26.37	25.00	<b>30.04</b>	38.35	<b>29.24</b>	31.23	29.61	31.32	55.12	23.34	24.20	28.10	23.55	47.68	<b>26.71</b>	31.00	26.91	27.10	25.26	25.39	24.92	36.70	30.12	25.26	<b>28.65</b>	<b>26.08</b>	<b>28.28</b>	<b>+1.8%</b>	Oct-16

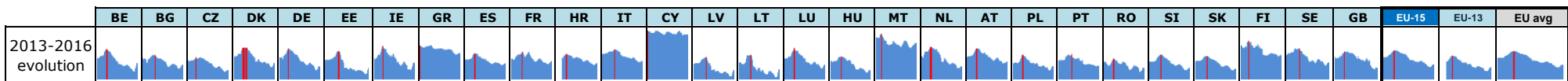
  : Estimations DG AGRI-C3

  : Estimations based on LTO / national statistics

  : "estimated" prices by MS (indicator of price movement, not to be relied upon to forecast prices)

Price of Sep 16 compared to :

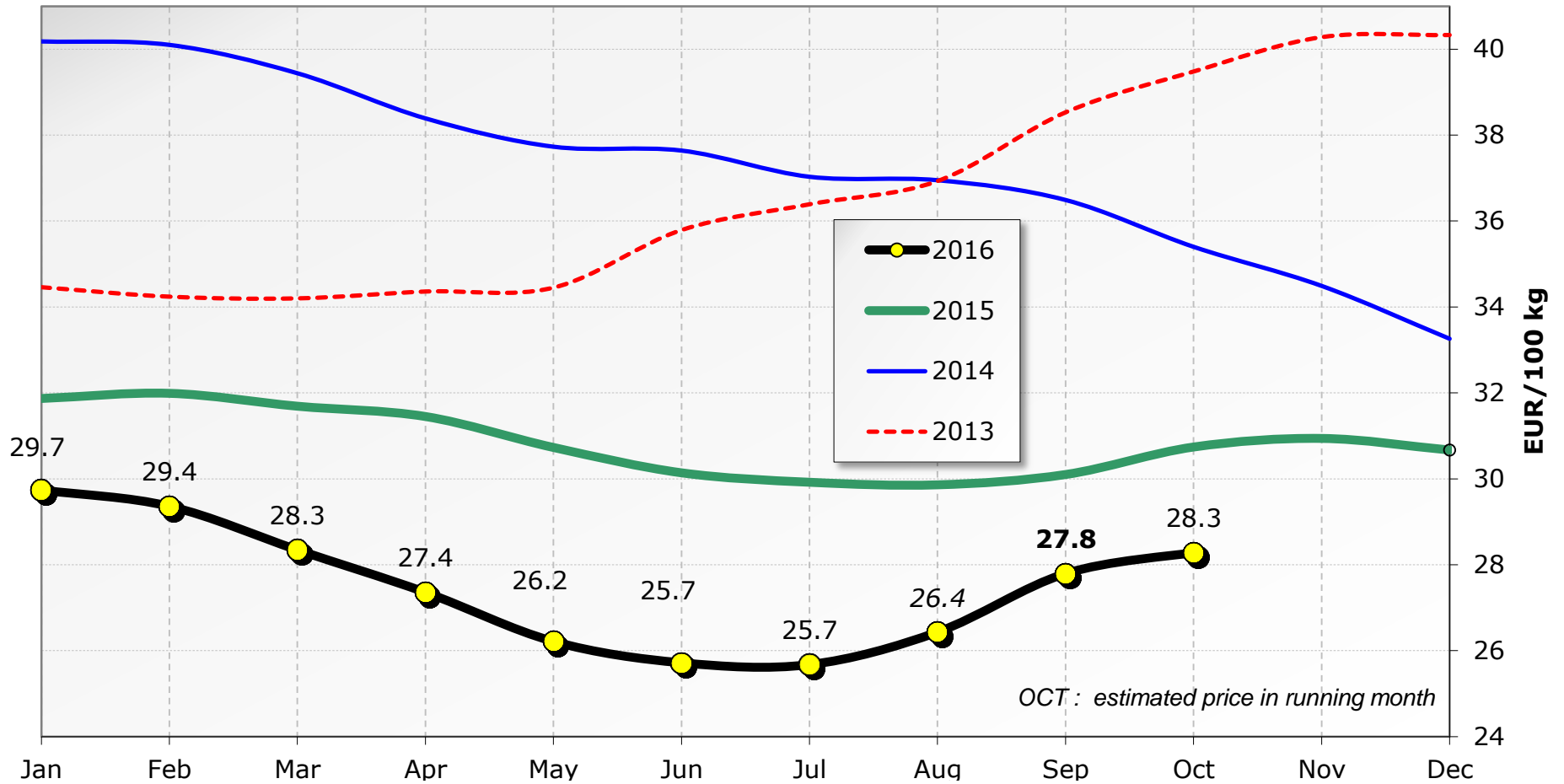
	BE	BG	CZ	DK	DE	EE	IE	GR	ES	FR	HR	IT	CY	LV	LT	LU	HU	MT	NL	AT	PL	PT	RO	SI	SK	FI	SE	GB	EU-15	EU-13	EU avg
Aug 16	+9.6%	+4.9%	+3.5%	+4.5%	+8.5%	+12.3%	+9.3%	+1.0%	+2.1%	+2.7%	+1.7%	+2.8%	+0.5%	+13.4%	+18.5%	+5.9%	+6.1%	+3.0%	+5.0%	-0.2%	+5.9%	+1.0%	+7.1%	+2.5%	+3.5%	+2.3%	+4.4%	+5.7%	<b>+5.0%</b>	<b>+6.3%</b>	<b>+5.2%</b>
Sep 15	-1%	-3%	-9%	-8%	-7%	+3%	+1%	-8%	-3%	-11%	-9%	-7%	-1%	+4%	+5%	-10%	-3%	-4%	-8%	-9%	-1%	-5%	idem	-12%	-9%	-3%	-4%	-18%	<b>-8%</b>	<b>-2%</b>	<b>-8%</b>



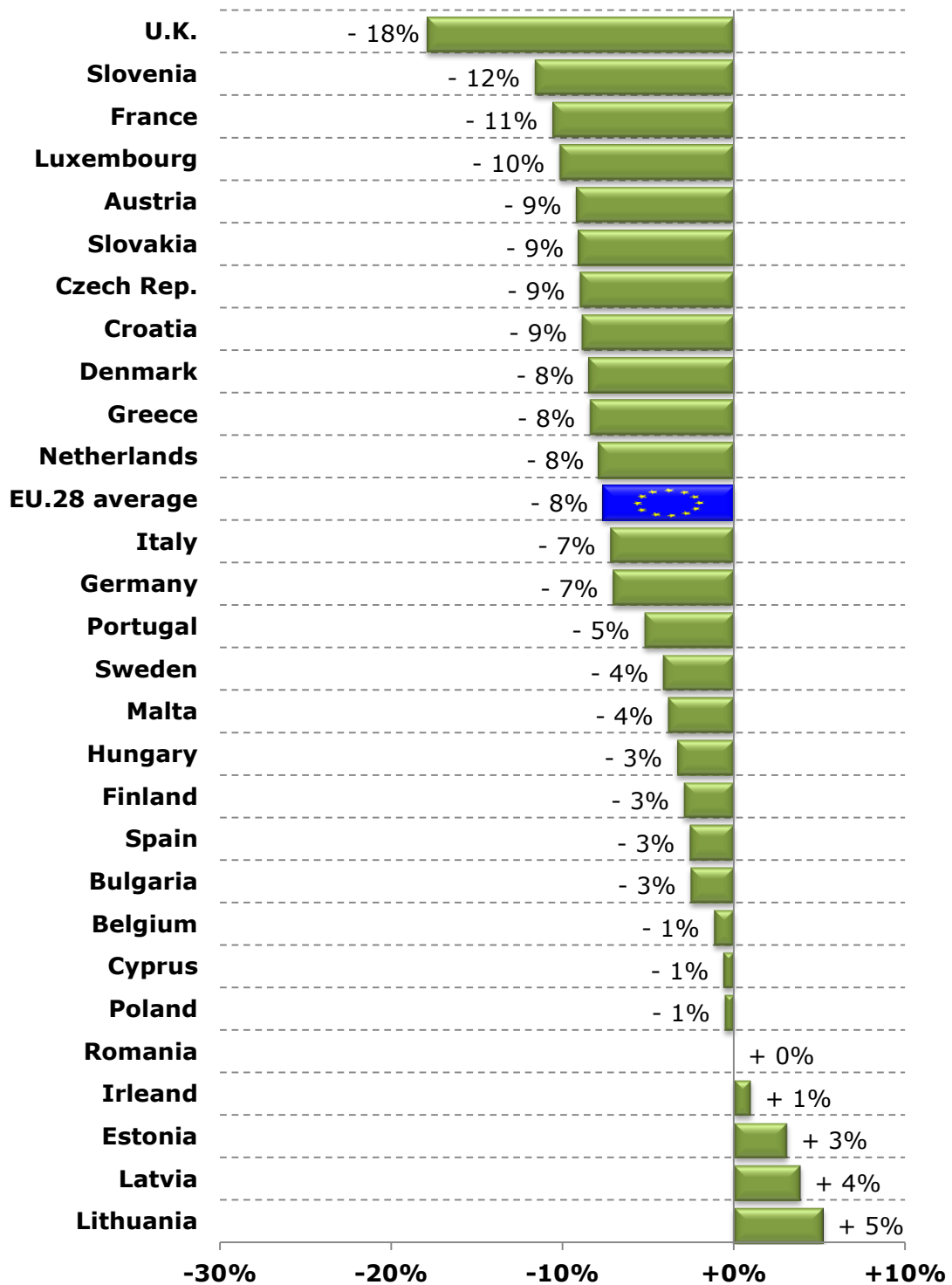
	BE	BG	CZ	DK	DE	EE	IE	GR	ES	FR	HR	IT	CY	LV	LT	LU	HU	MT	NL	AT	PL	PT	RO	SI	SK	FI	SE	GB	EU-15	EU-13	EU avg
<b>Max</b> since Jan 2013	41.9	37.0	35.1	43.5	42.5	40.3	44.9	45.5	38.3	39.8	37.8	41.8	58.9	35.2	37.0	42.9	35.7	56.1	44.0	42.7	37.2	37.8	33.8	37.3	36.0	49.5	42.5	40.0	41.0	36.4	40.3
	Dec 13	Mar 14	Oct 13	Nov 13	Nov 13	Mar 14	Nov 13	Jan 13	Dec 13	Jan 14	Dec 13	Mar 14	Jan 13	Mar 14	Feb 14	Dec 13	Jan 14	Jul 13	Nov 13	Dec 13	Dec 13	Apr 14	Dec 13	Feb 14	Feb 14	Oct 13	Mar 14	Nov 13	Nov 13	Dec 13	Dec 13
<b>Min</b> since Jan 2013	22.1	24.6	22.0	26.1	23.2	20.0	23.5	37.4	27.8	28.5	27.9	30.5	54.6	17.7	16.9	24.7	21.0	42.9	25.0	29.3	23.1	26.8	21.6	23.2	23.1	35.5	27.2	24.0	26.2	22.5	25.7
	Jul 16	Jun 16	Jul 16	Jul 16	Jun 16	Jul 16	Jun 16	Jun 16	Jul 16	Jul 16	Jul 16	Aug 16	Jul 14	Jul 16	Jun 16	Jul 16	Jul 16	Apr 16	May 16	Jun 16	Jun 16	Aug 16	Jun 16	Jun 16	Jul 16	Jul 16	Jul 16	Jul 16	Jul 16	Jun 16	Jul 16

# Milk Prices paid to the Producers

## EU (weight. avg.)



## Raw Milk Price evolution in September 2016 compared to September 2015

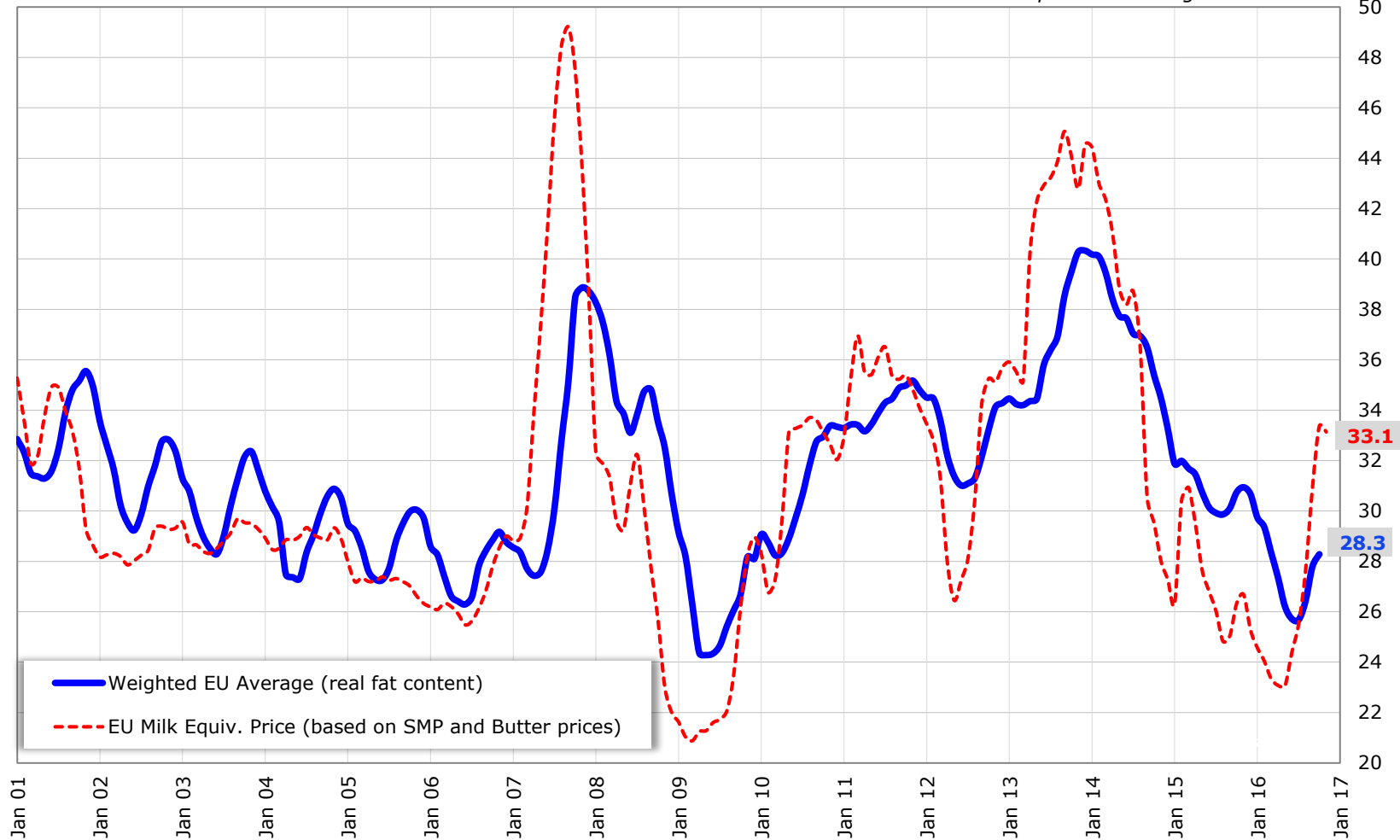


Source : Member States (Reg. 479/2010)

# EU Raw Milk Prices Evolution (up to October 2016\*)

EUR/100 kg

\* : estimated price in running month



Source : MS' communications under reg. 562/2005 & 479/2010

# EU MILK PRICES

( Sep 2016 vs Sep 2015 )

Source : Member States (Reg. 479/2010)

